

# Displaced Civilian (DC) Camp Operations

11 NOVEMBER, 2002

## Purpose:

To coordinate Government of Kuwait / IO – NGO support for Displaced Civilian (DC) Camps in the Iraq-Kuwait demilitarized zone and Southern Iraq in the event of coalition hostilities with Iraq, and to present the concept for a Humanitarian Operations Center (HOC)

## Displaced Civilian Threat

- Estimates Vary Significantly
  - UNHCR estimate 200K *50-200'*
  - ICRC estimate 40K
  - CFLCC Estimate 10-15K
- DC's caused by Coalition action - minimal:
  - Precision munitions
  - Restrictive Targeting (minimize collateral damage)
- DC's Caused by Iraqi action – potentially large group
  - Flooding
  - Massacre of repressed minorities (Shia)
  - Use of WMD

## DC Camp support requirements

- Accomodations
  - Tents and cots
  - Latrines
  - Bath and laundry facilities
- Life Sustainment
  - Ready supply of potable water
  - Feeding facilities
  - Medical facilities (treatment, evaluation, evacuation)
- Morale/Recreation
  - Communal center
  - Religious center (Mosque)
- Support
  - Camp administration facility
  - Camp security force
  - Camp detention facility

## DC CAMP ESTABLISHMENT PLANNING PRINCIPLES:

- Will have to be synchronized with coalition ground operations
  - Timing of establishment
  - Use of Main Supply Routes (MSRs)
  - Position of DC camp assets in battle-space
- DC Camps will have to be rapidly constructed
  - 5,000 person camp erected in four (4) days
  - Dedicated labor / transportation / logistical and security assets
- DC Camps must be rapidly expandable.
  - Build initial capacity
  - As that camp nears 50 % capacity, build additional camp(s)
- Each DC camp must have a dedicated Support Organization and all camps must report to a central HQ that coordinates operations

11/18/2002



## DC CAMP REQUIREMENTS

The following are capabilities required for the support of DC Camps in the event of hostilities with Iraq

- Establish an initial DC Camp capacity of 5K personnel no later than 4 days from execute order.
- Be prepared to expand DC Camp capacity by 5K increments every 4 days up to 50K
- Be prepared to further expand camp capacity to 100K within an additional 30 days
- Provide logistical and administrative support for up to 90 days

# Humanitarian Operations Center



11/18/2002

# HOC Concept

**The Humanitarian Operations Center is a coordination facility staffed by Civil Affairs Personnel. It provides interface between US military forces, coalition partners, International Organizations, and Non-governmental Organizations with the shared interest of providing humanitarian assistance to a populace in need.**

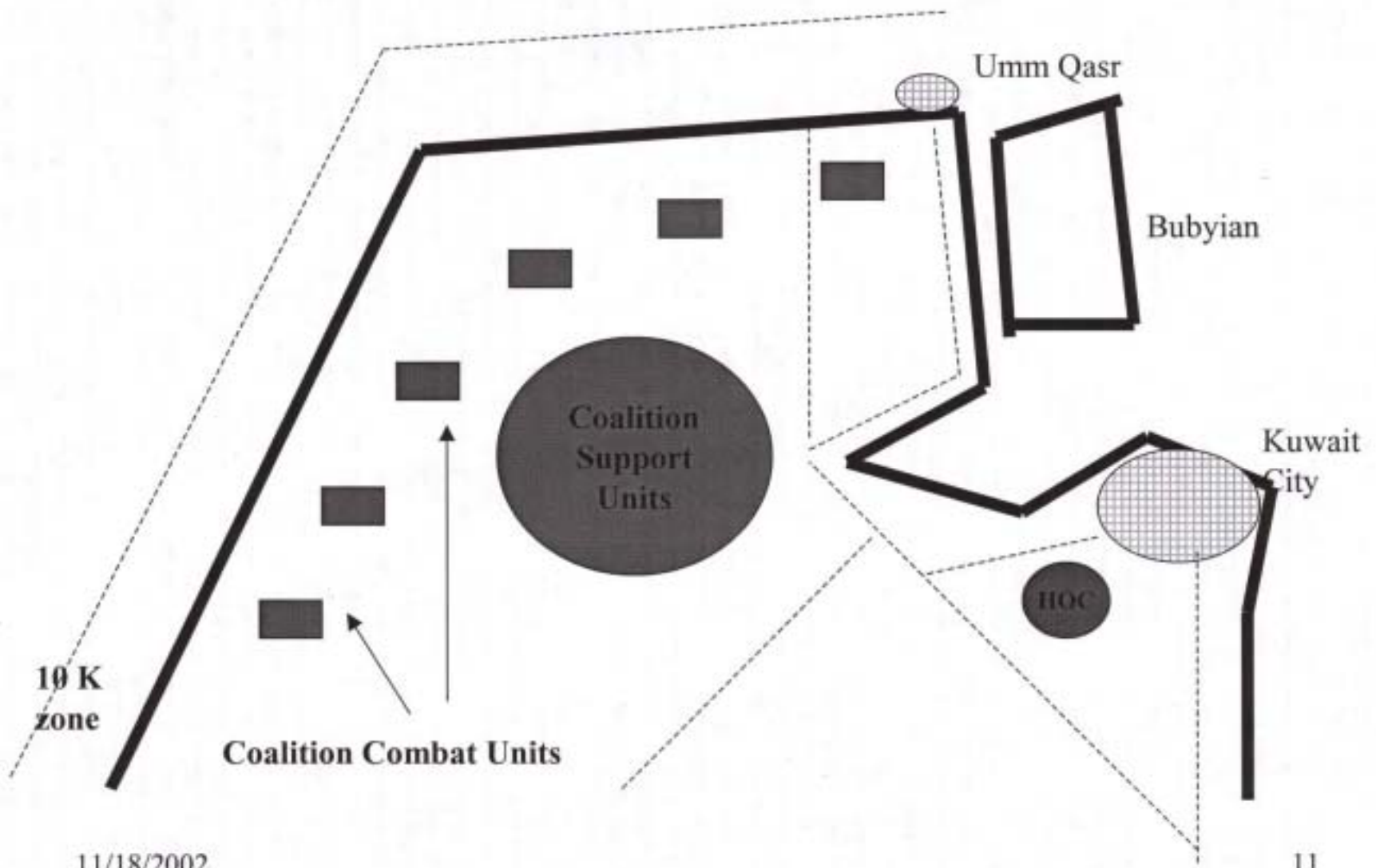


# HOC STRUCTURE

- **Staffed with representatives of Civil Affairs, functional areas and other special staff**
- **Easily accessible – civilian site**
- **Center for coalition partners, International Organizations, and Non-Governmental Organizations for interaction and coordination to match resources with identified needs**

# Functions

- Coordinate humanitarian assistance efforts with coalition partners and regionally focused IO/NGOs to limit impact of combat operations on the populace
- Coordinate with IO/NGO/USG to synchronize Dislocated Civilian operations
- Share civil affairs assessments with interested organizations
- Provide unclassified intelligence and operational update ISO Humanitarian Assistance Operations
- Work to provide security for humanitarian assistance resources operating in semi-permissive areas



10 K zone

Coalition Combat Units

Coalition Support Units

Umm Qasr

Bubyian

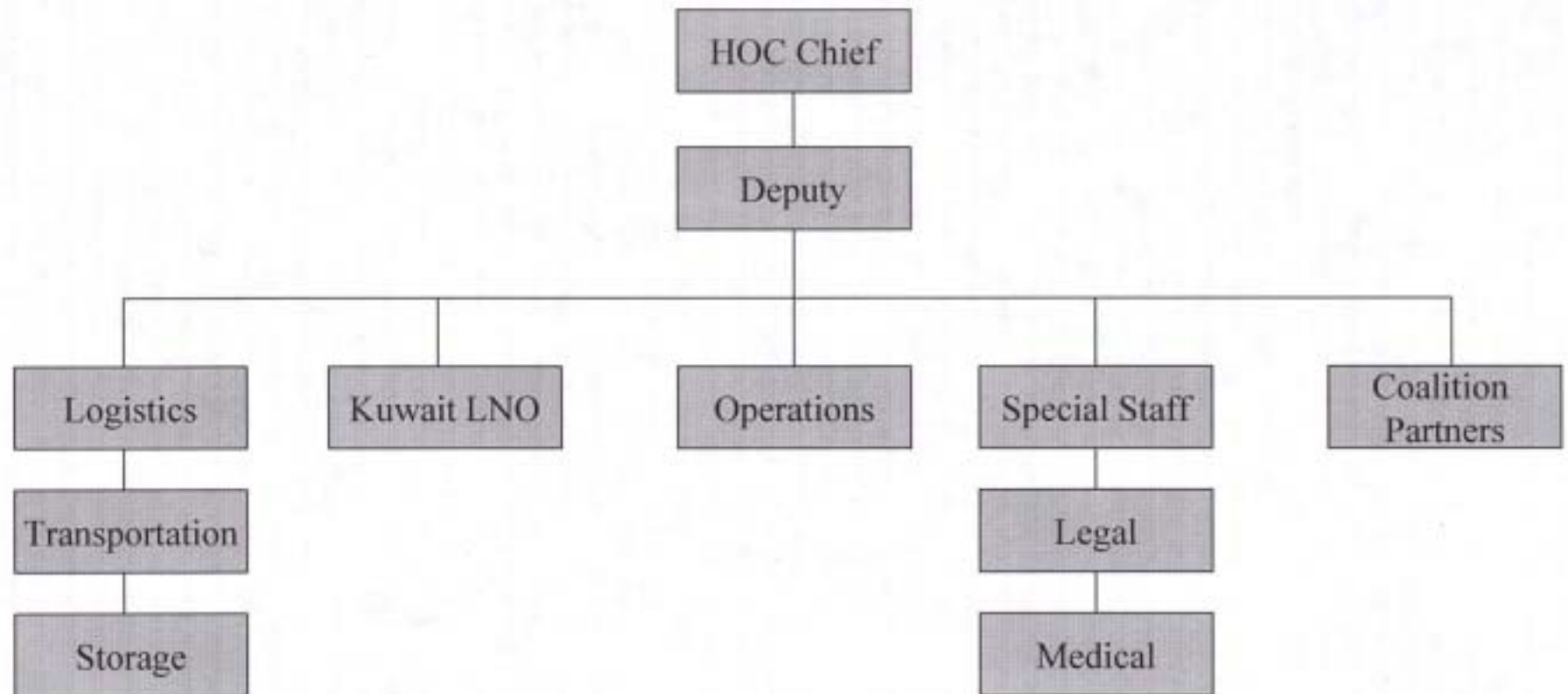
Kuwait City

HOC

11/18/2002

11

# HOC Manning Requirements





## **WAY AHEAD**

- **CFLCC CMO in association with Kuwaiti Ministry of Interior will conduct VA (Vulnerability Assessment) prior to establishment of HOC-KU**
- **Assess options for HOC-KU establishment**
- **Identify key Humanitarian Assistance organizations for representation in HOC-KU**
- **Continue to refine resource requirements for HOC-KU**